

Ball valve : Manually operated ball valve

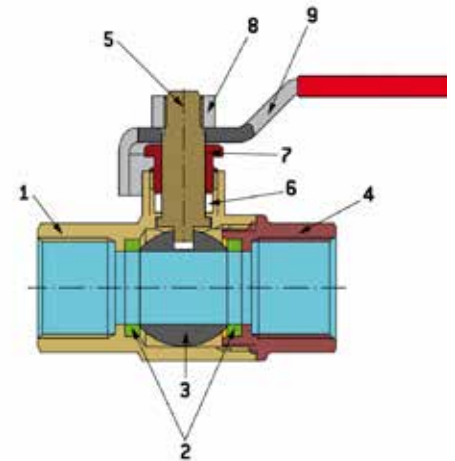
Application : Valve on yachts and small craft, amongst others as a seacock.

Features : Suitable for salt water, fresh water and diesel fuel.

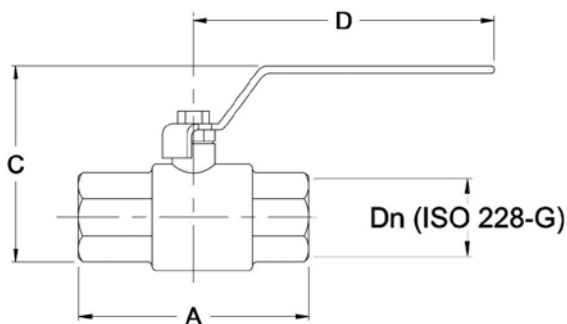
is fit for use with non-dangerous fluids as defined in Tab. 9 Dir. 97/23/CE, provided the fluids are non aggressive to the copper alloys specified on the enclosed bill of materials.

The dimensional characteristics of the valve allow its installation in conformity to EN9093-1.

- Material,**
- body (1)** : Bronze CC491K / EN1982
 - sealing ring (2)** : PTFE
 - ball (3)** : Brass CW617N / EN12165, Chrome plated
 - threaded connection (4)** : Bronze CC491K / EN1982
 - stem (5)** : Brass CW617N / EN12164
 - gland packing (6)** : PTFE
 - gland (7)** : CW617N / EN12164
 - lever nut (8)** : Stainless Steel
 - lever (9)** : Plastic-coated Stainless Steel



- Working pressure** : Up to 2" (incl.): PN32, over 2": PN25
- Working Temperature** : -10°C - +120°C
- Relevant CE Standards** : EN9093-1 / 97/23/CE
- Classification** : Non



Dimensions in mm

A	51	51	62	70	85	99	110	134	142	178	210
C	61	61	61	76	81	104	113	137	171	201	237
D	85	85	85	104	104	122	122	153	200	280	280
Dn	1/4"	3/8"	1/2"	3/4"	1"	1 1/4"	1 1/2"	2"	2 1/2"	3"	4"